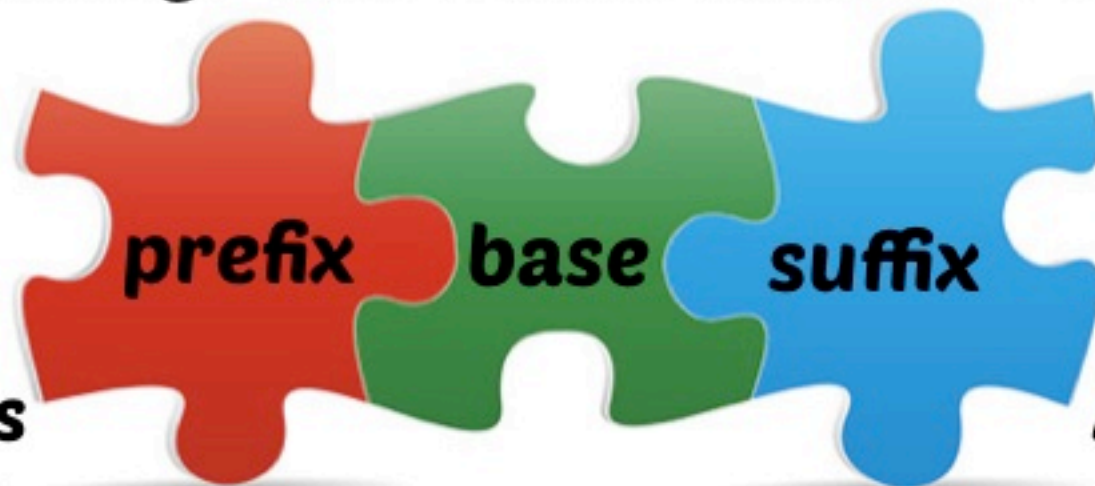




Building Vocabulary

Prefixes: “im-” & “in-”

A root is a word part that has a specific meaning. There are 3 kinds of roots:



A prefix is added to the front of a base.

A base is the main part of a word.

A suffix is added to the end of a base.



Building Vocabulary

Prefixes: “im-” & “in-”

The prefixes “in-” and “im-” can mean “in”, “into”, or “on”.



inspect
to look
carefully into
something

Can you name
other words that
use the prefixes
“im-” or “in-”?

impress
to press a
shape into
material





Building Vocabulary

Prefixes: “im-” & “in-”

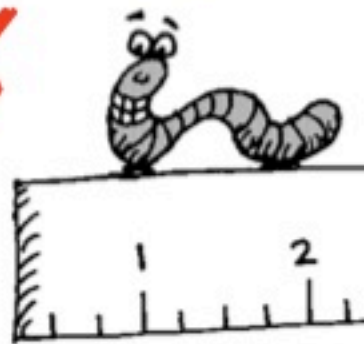
The prefix “in-” can mean “in”, “on”, or “into.”

Not every word with “in” uses that word part as a prefix.

Sometimes “in” is just a syllable with no meaning.



inhale
“in-” is a prefix



inch
“in-” is just a word part



Building Vocabulary

Prefixes: “im-” & “in-”

The base “port” is a root meaning “carry.”

During the days of railway travel, one job was to carry traveler’s luggage onto the train.

What do you think they called those workers?





Building Vocabulary

Prefixes: “im-” & “in-”

“Vis” is a Latin root that is used as a base. The root “vis” means “to see” or “to look at.”

What words based on the root “vis” can you think of?



visit
travel to see
someone



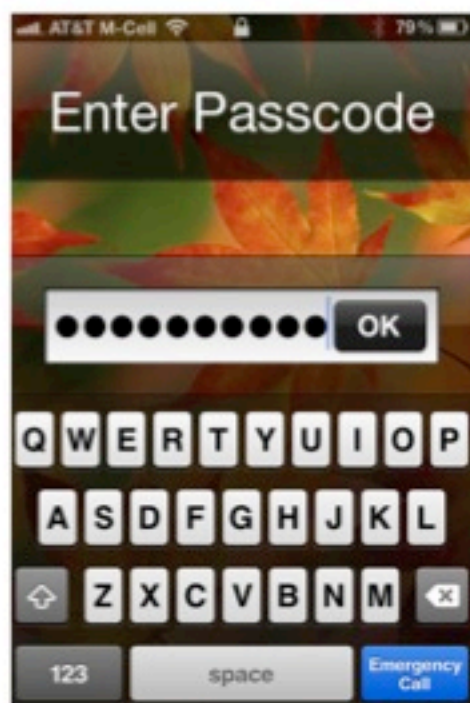
visor
headgear to help you see
when it is
sunny



Building Vocabulary

Prefixes: “im-” & “in-”

The root “in-” is a prefix that can mean “in”, “on”, or “into.”



For some devices, you need to put a passcode into the device before you use it.

What “in-” word would describe what someone is doing with their passcode?



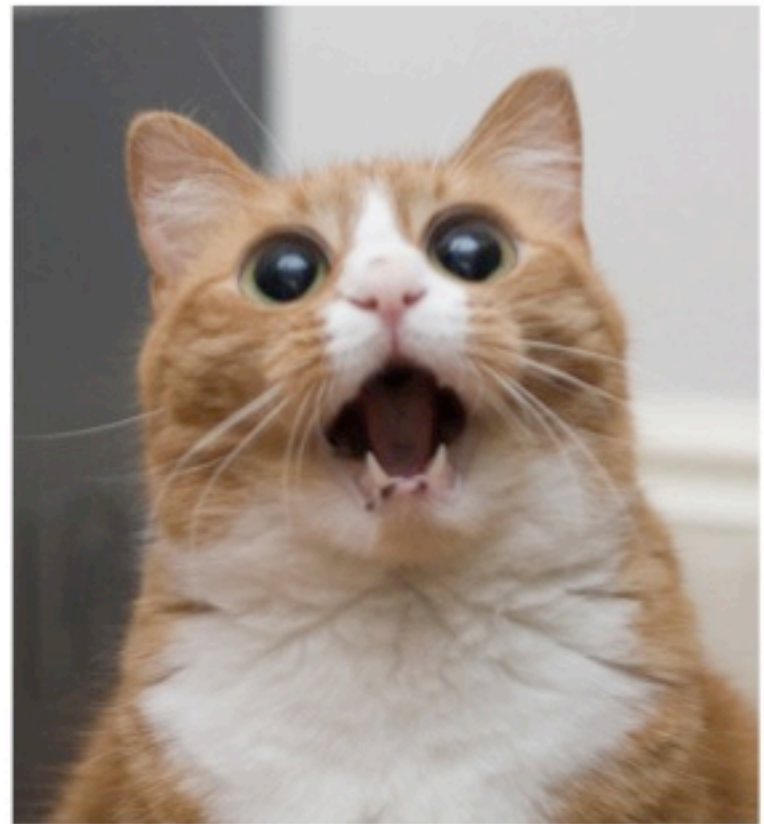
Building Vocabulary

Prefixes: “im-” & “in-”

The prefix “im-” can mean “in” or “into.”

If a person is amazing, then the idea or image of that person may be stuck in your head.

What “im-” word might describe that situation?





Building Vocabulary

Prefixes: “im-” & “in-”

The prefixes “in-” and “im-” can mean “in”, “into”, or “on”.



import
to carry goods to a place

Can you name other words that use the prefixes “im-” or “in-”?

inject
to force a liquid into one’s body



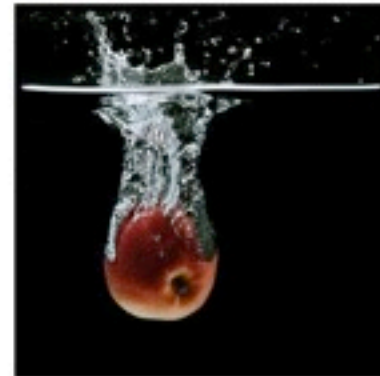


Building Vocabulary

Prefixes: “im-” & “in-”

The prefix “im-” can mean “in”, “on”, or “into.”

The letters “im”
are not always a
prefix in a word.



immerse
“im-” is a
prefix

The letters “im”
can be a word part
with no meaning.



imme
“im” is just
a word part



Building Vocabulary

Prefixes: “im-” & “in-”

The root “in-” can mean “in”, “into”, or “on.”



Thomas Edison made some objects, such as the phonograph, come into existence.

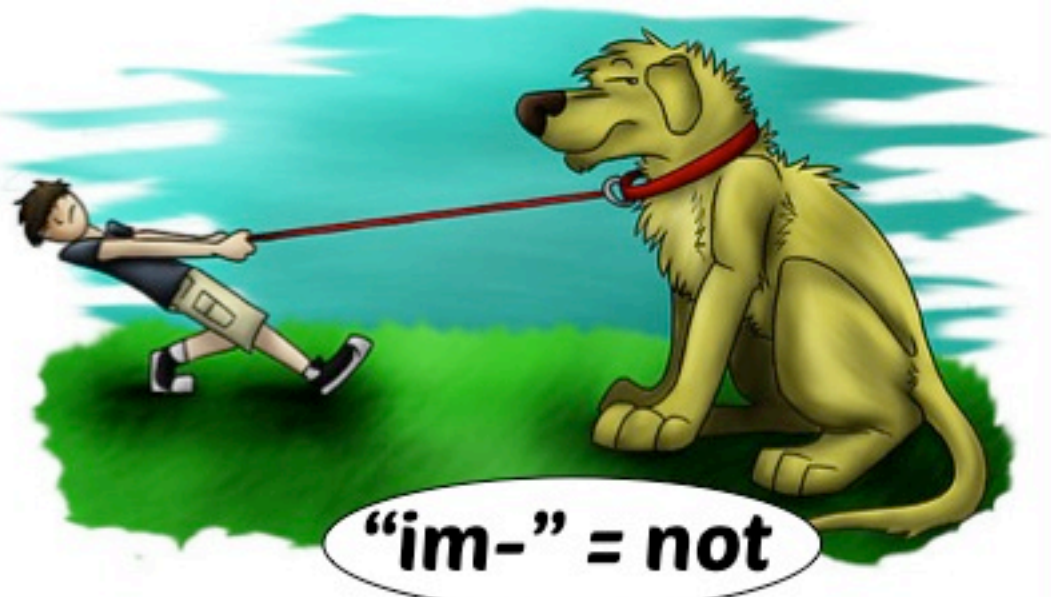
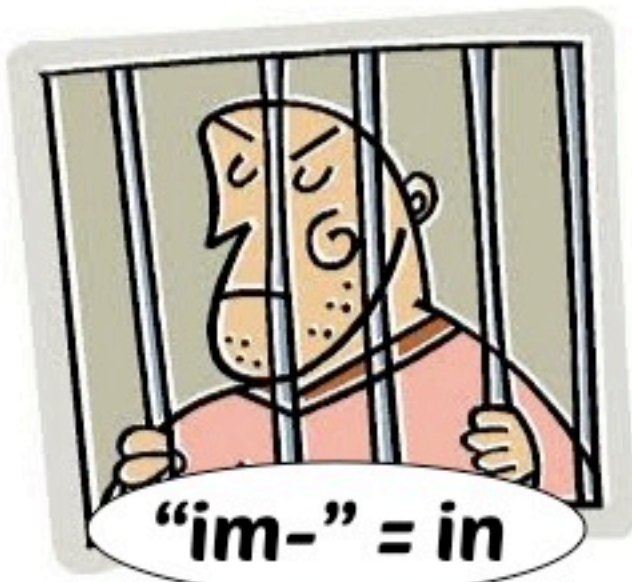
What “in-” word could be used to describe Thomas Edison’s work?



Building Vocabulary

Prefixes: “im-” & “in-”

The prefix “im-” can mean “in” and it can also mean “not”. What words with the root “im-” are represented by the pictures?





Building Vocabulary

Prefixes: “im-” & “in-”

The roots “mot”,
“mov”, and
“mobil” are used
as bases and
mean “move.”



motor
device that
can make
objects move

What other words
with these roots
can you think of?

movie
“pictures” that
show people
moving





Building Vocabulary

Prefixes: “im-” & “in-”

The root “in-” is a prefix that can mean “in”, “on”, or “into”, but it can *also* mean “not.”



These appliances are not operating properly.

What “in-” word would describe these appliances?



Building Vocabulary

Prefixes: “im-” & “in-”

The prefixes “in-” and “im-” can mean “in”, “into”, or “on”.

infection
disease caused
when germs get
in the body



immigrant
a person who
moves to live in
a new country

Can you name
other words
that use these
prefixes?



Building Vocabulary

Prefixes: “im-” & “in-”

The prefix “in-” has multiple meanings. It can mean “into” and it can also mean “not.”

inexpressive

inspection



In which word does “in-” mean “into” and in which word does “in-” mean “not”?



Building Vocabulary

Prefixes: “im-” & “in-”

The prefix “in-” can mean “in”, “into”, or “on.”

There is a special ceremony when a president is sworn into office.

Can you name that word for that ceremony?





Building Vocabulary

Roots & Their Meanings

“Fin” is a Latin root. The base “fin” means “end” or “boundary.”

Can you name the “fin” words that match the pictures and descriptions?



trapped
within
certain
boundaries



the end of a
particular
event



Building Vocabulary

Prefixes: “im-” & “in-”

The prefix “im-” is a Latin root that can mean “in” or “into.”

Do you know
what word
describes
when a
building is
collapsed
into itself?





Building Vocabulary

Prefixes: “im-” & “in-”

The prefix “in-” can mean “in”, “on”, or “into.”

Not every word with “in” uses that word part as a prefix.



injection
“in-” is a prefix

Sometimes “in” is just a syllable with no meaning.



ink
“in-” is just a word part



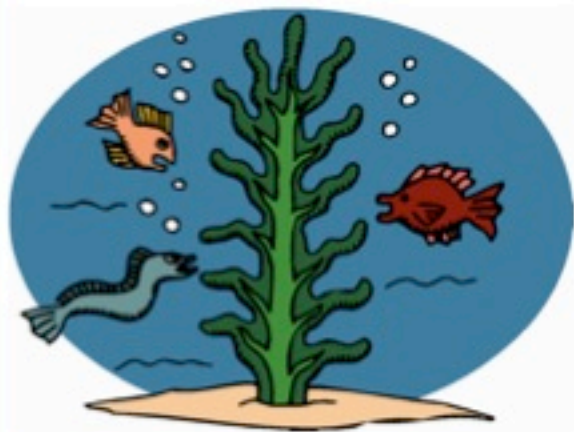
Building Vocabulary

Prefixes: “im-” & “in-”

The prefixes “in-” and “im-” can mean “in”, “into”, or “on”.

impond

to put vehicles into a lot for violating laws



inhabit
to live in
a certain
habitat

Can you name
other words that
use the prefixes
“im-” or “in-”?



Building Vocabulary

Prefixes: “im-” & “in-”

The prefix “im-” means “in.”
The base “port” means “carry.”

**Those two roots can be used
to create a word that
describes information that
you should carry around in
your brain all the time.**



Can you name that word?



Building Vocabulary

Prefixes: “im-” & “in-”

The prefix “im-” has multiple meanings. It can mean “into” and it can also mean “not.”

imprint



immobile



In which word does “im-” mean “into” and in which word does “im-” mean “not”?



Building Vocabulary Roots & Their Meanings

“Mot” and “mobil”
are roots that have
the meaning “move.”



a vehicle that moves

What are the “mot”
and “mobil” words
that match the
pictures and
descriptions?

to move to a
higher rank or
position





Building Vocabulary

Prefixes: “im-” & “in-”

The prefix “in-” means “in.”

The Latin word “habitare” means “to live.”

Can you use the roots to create a word that names people who live in a certain place, such as an island?



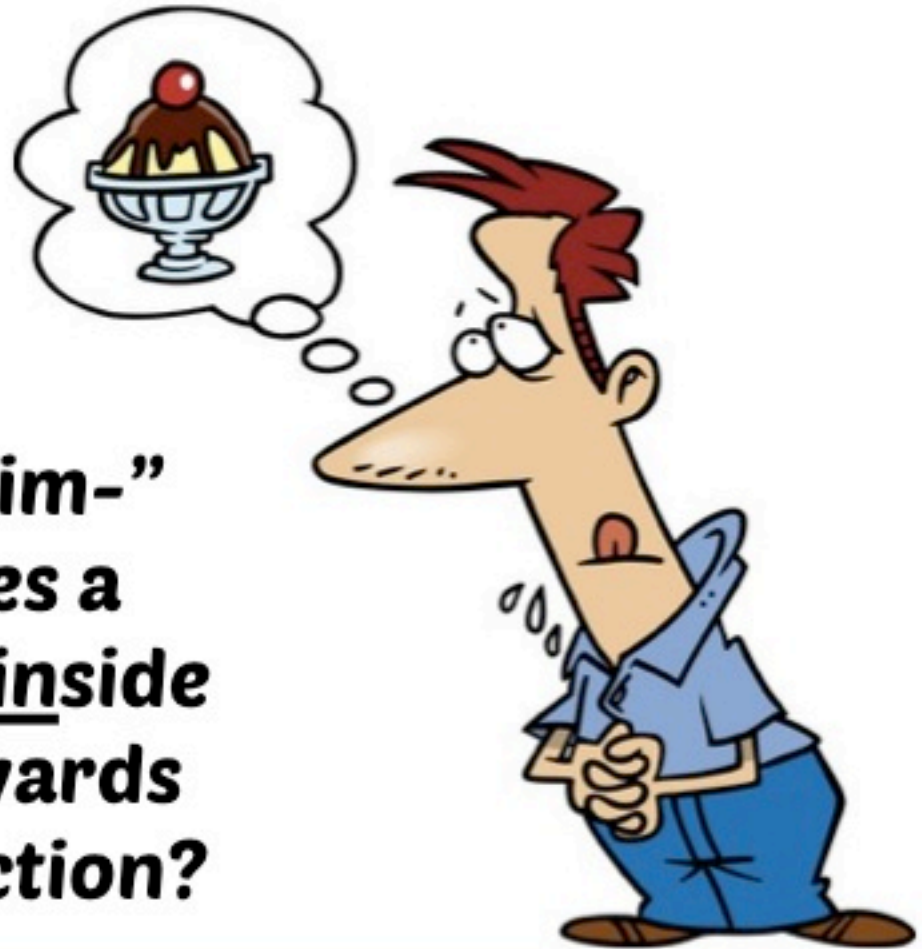


Building Vocabulary

Prefixes: “im-” & “in-”

The prefix “im-”
can mean “in”,
“on”, or “into.”

Can you name the “im-”
word that describes a
strong feeling from inside
that pushes you towards
a certain object or action?





Building Vocabulary

Prefixes: “im-” & “in-”

The prefixes “in-” and “im-” can mean “in”, “into”, or “on”.



to put something, such as a code, into a machine

What are the “im-” and “in-” words that match the descriptions?



to put someone in a prison



Building Vocabulary

Prefixes: “im-” & “in-”

The prefix “im-” can mean “in”, “on”, or “into.”

Not every word with “im” uses that word part as a prefix.

Sometimes “im” is just a syllable with no meaning.



import
“im-” is a prefix



shimp
“im” is just a word part



Building Vocabulary

Prefixes: “im-” & “in-”

The root “in-” can mean “in”, “into”, or “on.”



Balloons and tires are two objects that can have air forced into them to fill them up.

What “in-” word can be used to describe putting air into a balloon?



Building Vocabulary

Comparing Prefixes

“Pre-” is a prefix based on the Latin word “prae.” The root “pre-” means “before.”

Can you identify the words described below?

happening
before it is
supposed to
occur

the time before
people were
recording the
events of history

to identify
an event
before it
occurs



Building Vocabulary

Prefixes: “im-” & “in-”

The root “im-” is a prefix that can mean “into.”



A meteor can make a crater when crashing into a planet.

What “im-” word describes the forceful contact of one thing into another?



Building Vocabulary

Prefixes: “im-” & “in-”

The root “in-” is a prefix that can mean “into.”

What “in-” word can be used to name the money that goes into a person’s bank account, such as from a salary?

