



Building Vocabulary

Prefix: “tele-”

The prefix “tele-” can mean “far” or “from afar.”

Do you know other words that use the prefix “tele-”?



telephone
device for talking to someone far away

telescope
device to give close-up views of objects from afar





Building Vocabulary

Prefix: “tele-”

The prefix “tele-” means “far” or “from afar.”

The base “vis” means “look” or “see.”

What “tele-” word names a device that allows you to see images projected from afar?





Building Vocabulary

Prefix: “tele-”

The prefix “tele-” means “far” or “from afar.”

In “Star Trek”, a machine is able to move someone magically from one place to another that is far away. What “tele-” word names that machine?





Building Vocabulary

Prefix: “tele-”

The prefix “tele-” means “far” or “from afar.”
The Greek word “skopein” means “look at.”

What “tele-” word
names a device that
allows you have a
close-up look at objects
that are far away?





Building Vocabulary

Prefix: “tele-”

The prefix “tele-” means “far” or “from afar.”

The Greek word “kinein” means “to move.”

What word uses
both of those
word parts and
names the ability
to move objects
from afar?





Building Vocabulary

Prefix: “tele-”

The prefix “tele-” means “far” or “from afar.”

What “tele-” word names a device use to communicate with someone from afar?



wiseGEEK





Building Vocabulary

Prefix: “tele-”

The prefix “tele-” means “far” or “from afar.”

What word names the job of trying to sell people goods or services from afar, calling them on the phone, not seeing them in person?





Building Vocabulary

Prefix: “tele-”

The prefix “tele-” means “far” or “from afar.”
The Greek word “pathos” can mean “feeling.”

**What word uses
both of those
word parts and
names the ability
to communicate
ideas using only
one’s mind?**



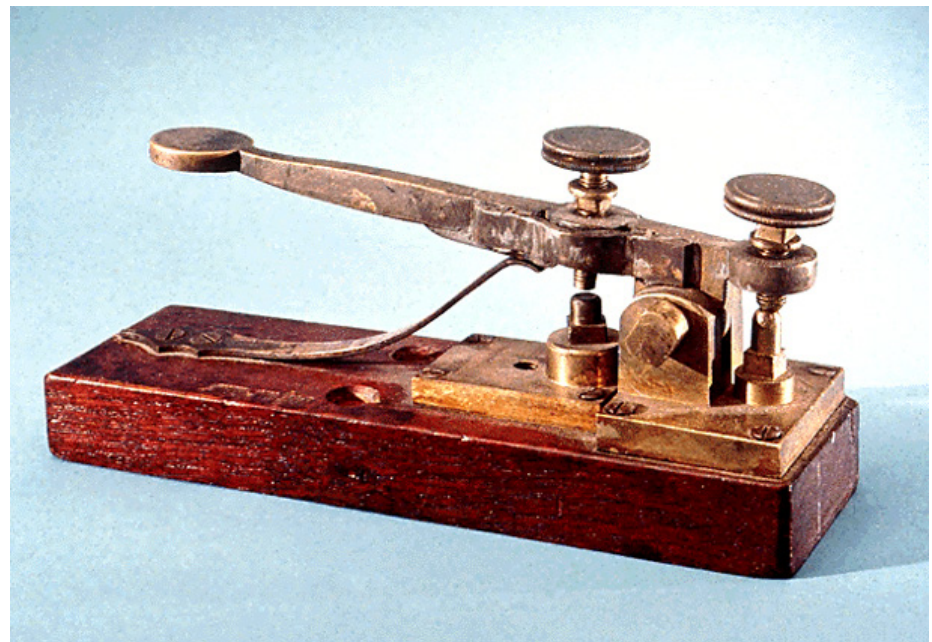


Building Vocabulary

Prefix: “tele-”

The prefix “tele-” means “far” or “from afar.”
The Greek word “graphein” means “to write.”

What word is a machine that can send a written message, in code, to a location that is far away?





Building Vocabulary

Prefix: “tele-”

The prefix “tele-” means “far” or “from afar.”

**What “tele-”
word names a
meeting held with
people that are
far away, such as
using programs
like Skype?**





Building Vocabulary

Prefix: “tele-”

The prefix “tele-” means “far” or “from afar.”

The Greek word “phōt” means “light.”

What word uses both of those word parts and names a type of lens that gives you a close-up view of objects that are far away?

